

SCALE 1/3

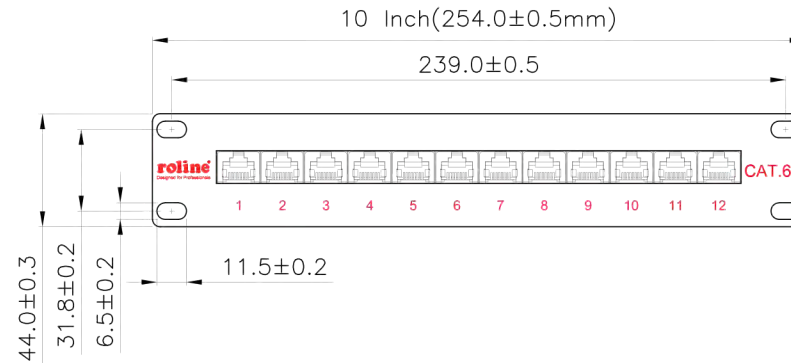
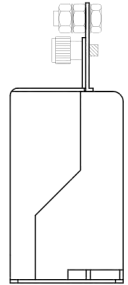
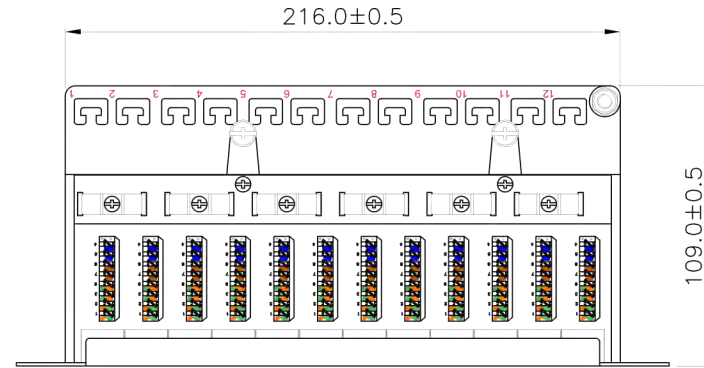
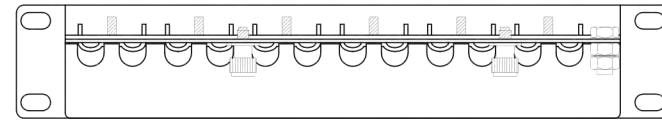
Specification :

Material :

1. Panel : SECC, 1.2 mm thickness with optional color painted.
2. RJ45 Jack :
 - 2-1. Housing : PBT+Glass Fiber, UL 94V-0.
 - 2-2. Contact Bracket : PBT+Glass Fiber, UL 94V-0.
3. RJ45 Jack Contact :
 - 3-1. Material : Phosphor Bronze with Nickel plated.
 - 3-2. Finish : 50 micro-inch Gold plated on Plug contact area.
4. RJ45 Jack Shield : Bronze With Nickel plated.
5. IDC :
 - 5-1. Housing : PC+Glass Fiber, UL 94V-2.
 - 5-2. Terminal : Phosphor Bronze with Tin plated.
6. PCB : FR4, UL 94V-0.

Performance :

- a. T568A & T568B wiring sticker on PCB.
- b. Insertion force : 30N max. (IEC 60603-7-5)
- c. Retention strength : 7.7 kg between Jack and Plug.
- d. Operating temperature : -10°C to 60°C. (ISO/IEC 11801, ANSI/TIA 568 C.2)
- e. Life(mating cycles) :
 - *Jack : 750 cycles min. (ISO/IEC 11801, IEC 60603-7-5)
 - *IDC : Suitable for 22-26 AWG stranded and solid wire, Compatible with Krone punch down tool.
- f. The CAT.6A channel transmission performance is in compliance with TIA/EIA 568C.2 & ISO/IEC 11801 standard.



| | | | | | | |
|---|----------|-------------|-------|----------------------|----|--|
| GENERAL TOLERANCE OF DIMENSIONS X.XXX ±0.005 X.XX ±0.05 X.X ±0.1 | DRAWING | 05.SEP.2021 | ZS | | | |
| | CHECK | 05.SEP.2021 | DAY | | | |
| | APPROVAL | 05.SEP.2021 | FRANK | | | |
| | | DATE | NAME | | | |
| SCALE | 1/3(A4) | UNIT | mm | ITEM NO.: 26.11.0316 | | |
| DRAWING NO. | | 26.11.0316 | | | | |
| DRAWING CLASSIFICATION | | S | SHEET | 1 OF 1 | 01 | |